

**GYM &
SPORT
MANUAL**

TABLE OF CONTENTS

Page No.

Section A : HR Structure

1. Introduction	1
2. Organizational Structure	1
3. Roles & Responsibilities Towards (Gym & sports in-Charge/ Trainer)	1
4. Roles & Responsibilities Towards Sports (Gym & sports in-Charge/ Trainer)	2
5. Roles & Responsibilities (Boys Care Taker)	2
6. Roles & Responsibilities (Girls Care Taker)	3

Section B : Form & Membership Card

1. Gym Registration Form	4
a. Form	5
b. Rules & Regulations	6
c. Acknowledgment	7-8
2. Gym Membership Card	9
3. Fee	4
4. Fee Rebate For Warden	4

Section C : Guidline

1. Instructions For Gym & Indoor Sports	
1. Discipline	10
2. Timings	10
3. Locker System	10
4. Games Activities Systems & Processes	10
5. Housekeeping	11
6. Indent Sheet	12
7. Sports Item Repair Register	13
8. Housekeeping Chart	14

GYM & SPORT MANUAL

Section D : Formats System

1. Registration Form File	15
2. Daily Entry Register	15
3. Daily Attendance Register	15
4. Service Record Register	15
5. Electrical Consumption Register	16
6. Weekly Maintenance Register	16
7. Stock Ledger	16
8. Index Sheet	17
9. Daily Entry Register Format	18
10. Daily Attendance Register Format	19
11. Service Record Register Format	20
12. Electrical Consumption Register Format	21
13. Weekly Maintenance Register Format	22
14. Sports Ledger Fixed Asset	23
15. Sports Ledger Consumable	24

Section E : Weekly Reporting System

Gym/ Sports Weekly Report Cum Feedback Form	26
---	----

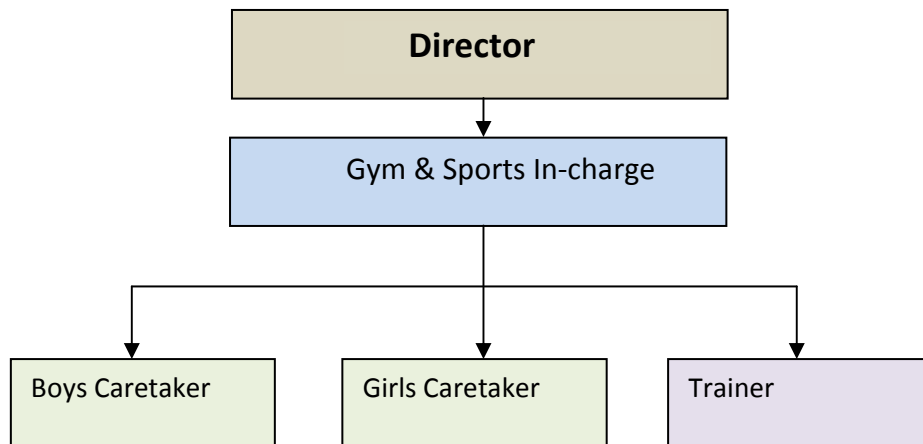
Chapter 1

Introduction & HR Structure

1. Introduction

The College has made paramount efforts to provide its students the best of education, along with facilitating them with quality infrastructure. The College also understands the significance of sports, co-curricular, and recreational activities. Provision of Gym & Sports facilities is a live example of that. However, as we understand, each & every facility has to be maintained to be able to be utilized till long term, and there has to be a structured system and rules & regulation of its usage & maintenance. The manual is created with the intent to set these rules for using & maintaining the sports & gym facility.

2. Organizational Structure



TO READ / KNOW MORE

Give us a call: +91 141 406 1465

Send us an email: support@eduguru.biz